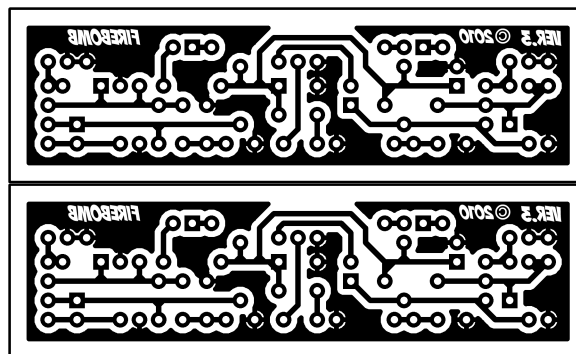
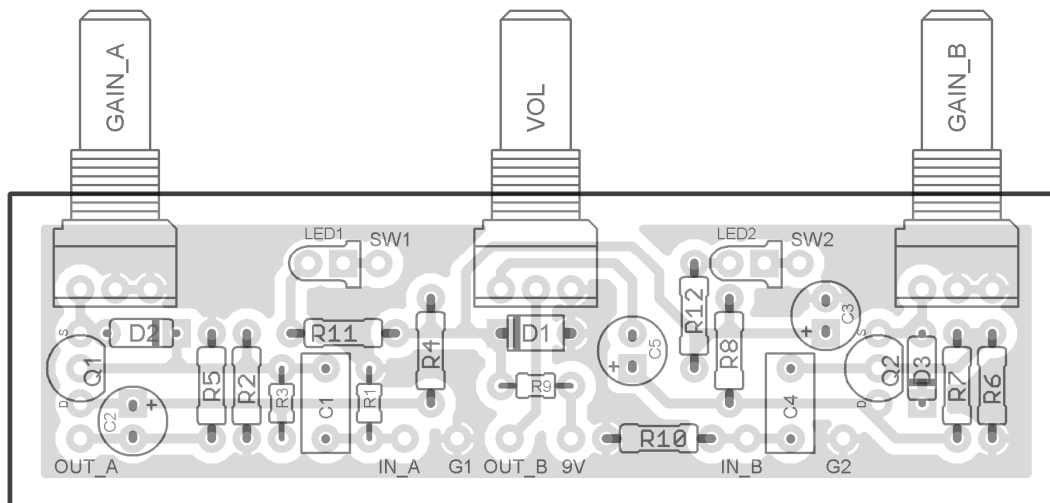
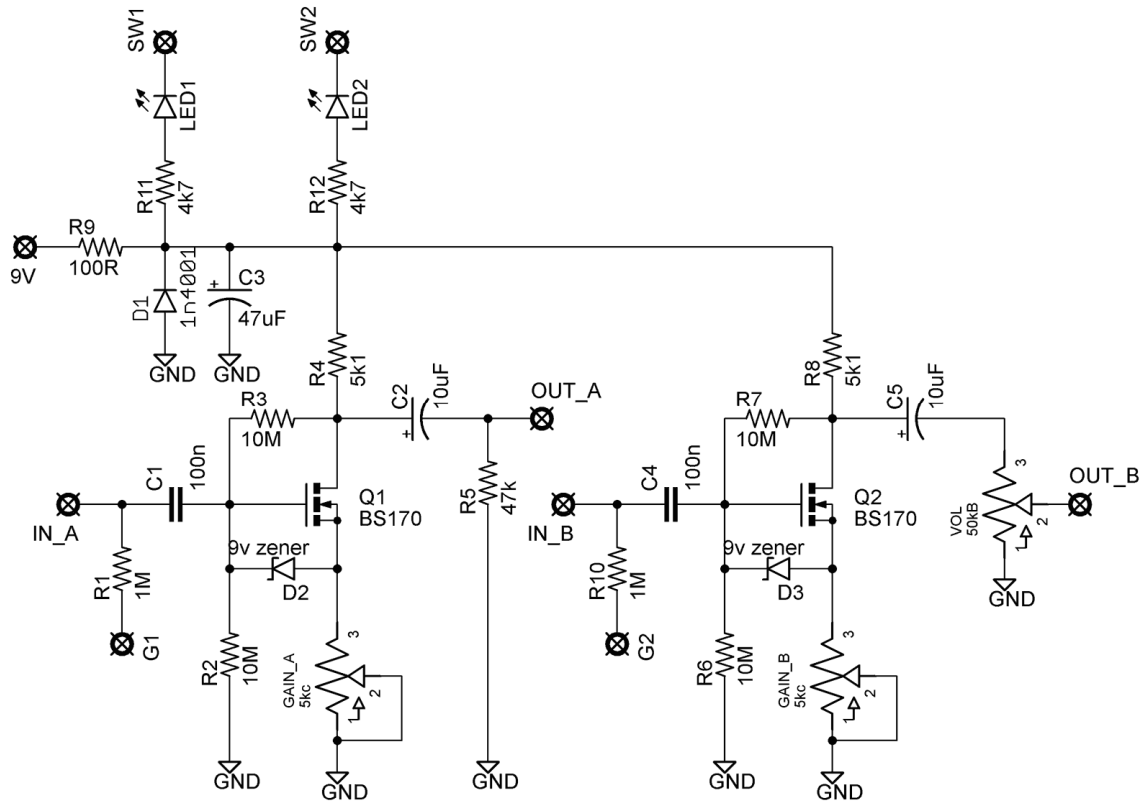


FIREBOMB

(based on the zVex Super Duper 2n1)
PCB artwork ©2010 madbeanpedals
Ver.3 04.09.10

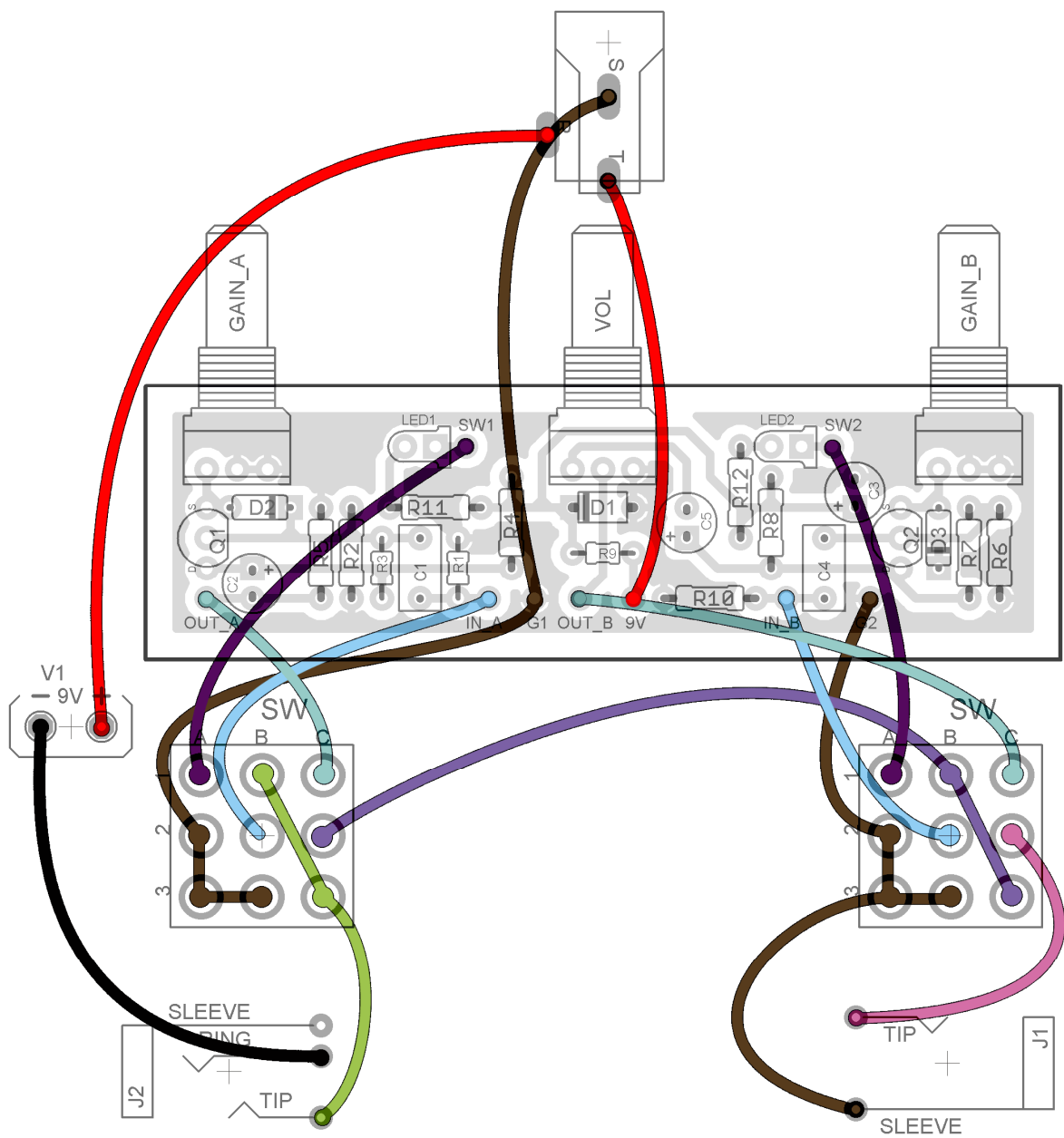


R1	1M	C1	100n
R2	10M	C2	10uF
R3	10M	C3	47uF
R4	5k1	C4	100n
R5	47k	C5	10uF
R6	10M		
R7	10M	Q1, Q2	BS170
R8	5k1		
R9	100R	D1	1n4001
R10	1M	D2, D3	9v zener
R11	4k7		
R12	4k7	GAIN_A	5kC
		GAIN_B	5kC
		VOL	50kB

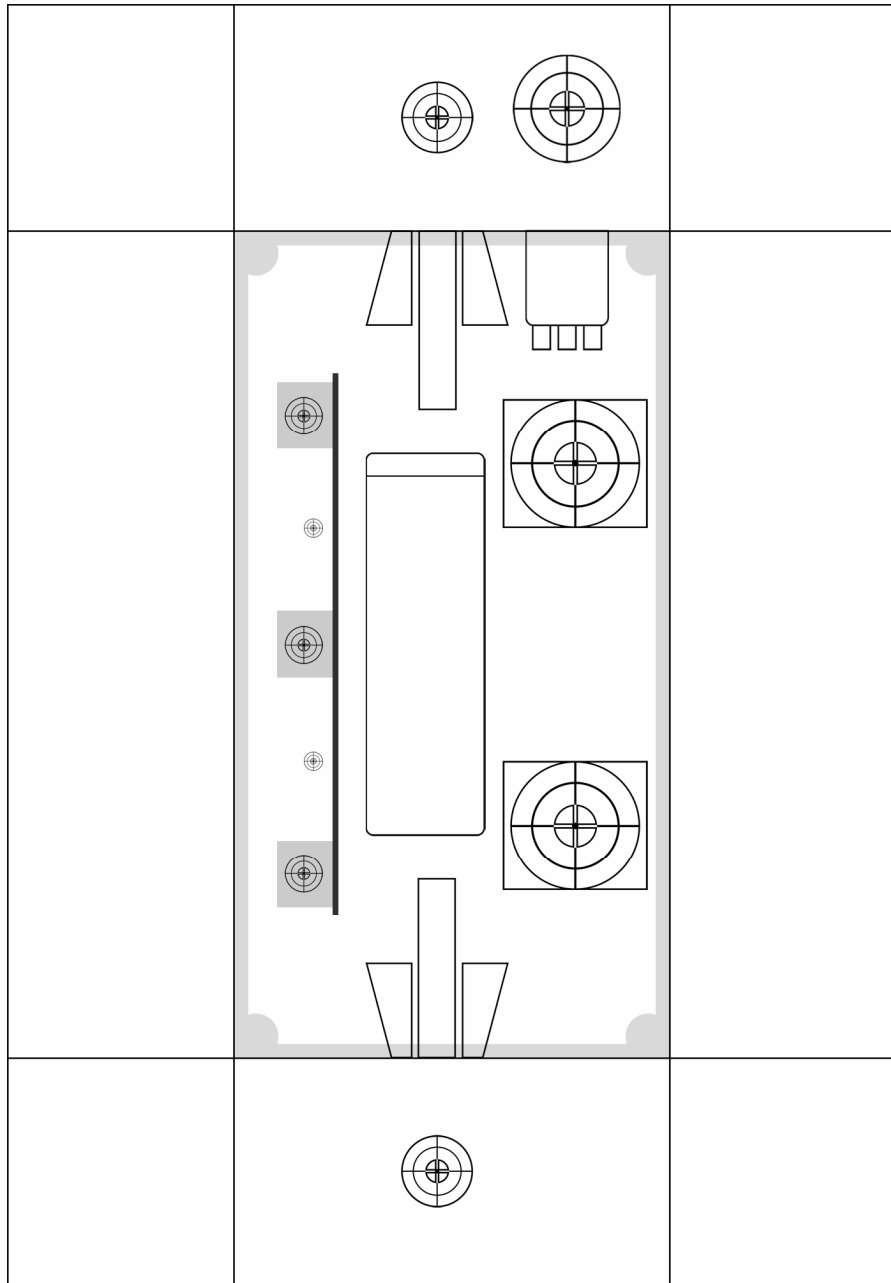


Notes

- You can use regular 16mm pots if you do not have the Alpha 9mm green ones. The pots are wired 3-2-1 (shaft down) left to right. You will need to adjust accordingly when drilling your enclosure to account for the increased diameter of the 16mm pots.



1590B/1290NS Enclosure (9mm pot layout)



This drilling template is provided "as is". Use at your own risk!