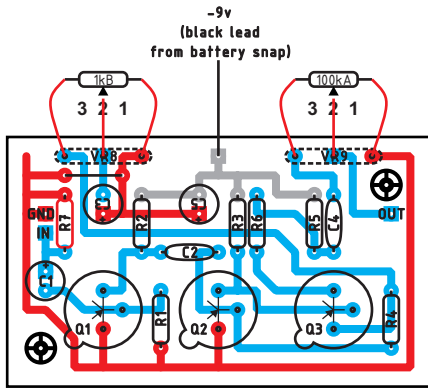


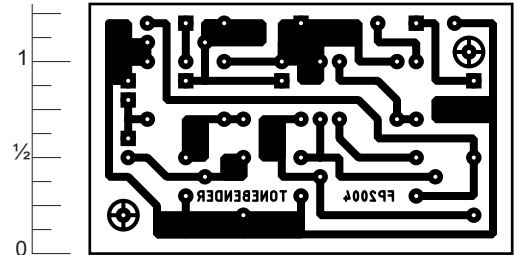
# TONE BENDER MKII

Rev.1.Jan.12.2004

Build the ToneBender Professional MKII on this board. This circuit uses positive ground, keep that in mind when using with other pedals (don't share the same power supply with negative ground pedals). Off board components except for the potentiometers are not shown on the layout. Trademarks are property of their owners.



LAYOUT



READY TO TRANSFER

## Parts List

### Resistors

- R1 - 100k
- R2 - 10k
- R3 - 47k
- R4 - 100k
- R5 - 1k
- R6 - 8k2 (8.2k)
- R7 - 2M2 (2.2M)

### Capacitors

- C1 - 4.7 $\mu$ F
- C2 - 0.1 $\mu$ F
- C3 - 4.7 $\mu$ F
- C4 - 0.01 $\mu$ F
- C5 - 47 $\mu$ F

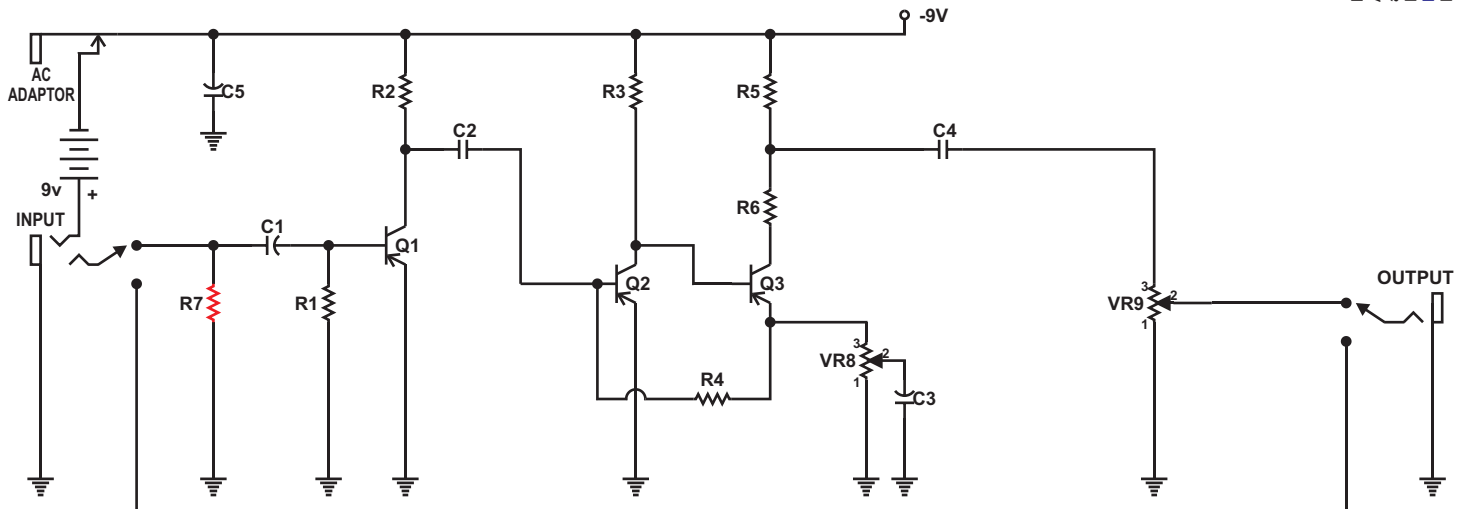
### Pots

- VR8 - 1k lin.
- VR9 - 100k log.

### Transistors

- Q1 - PNP Ge
- Q2 - PNP Ge
- Q3 - PNP Ge

## Schematic



Layout and presentation © by Francisco Peña 2001-2004®.  
 All rights reserved. Authorization for personal use only.  
 any commercial use is forbidden.  
 Permission for posting/serving limited to  
<http://www.tonepad.com>  
 Permission refused for posting from other sites.