

Vintage Les Paul SC Junior measurement collecting

Download for better viewing.

some measurements require careful removal of plastics, but any and all measurements help... even if you'd rather not remove anything.

bridge studs do not need to be moved / removed

the truss rod nut does not need to be touched.

tuners and ferrules do not need to be removed.

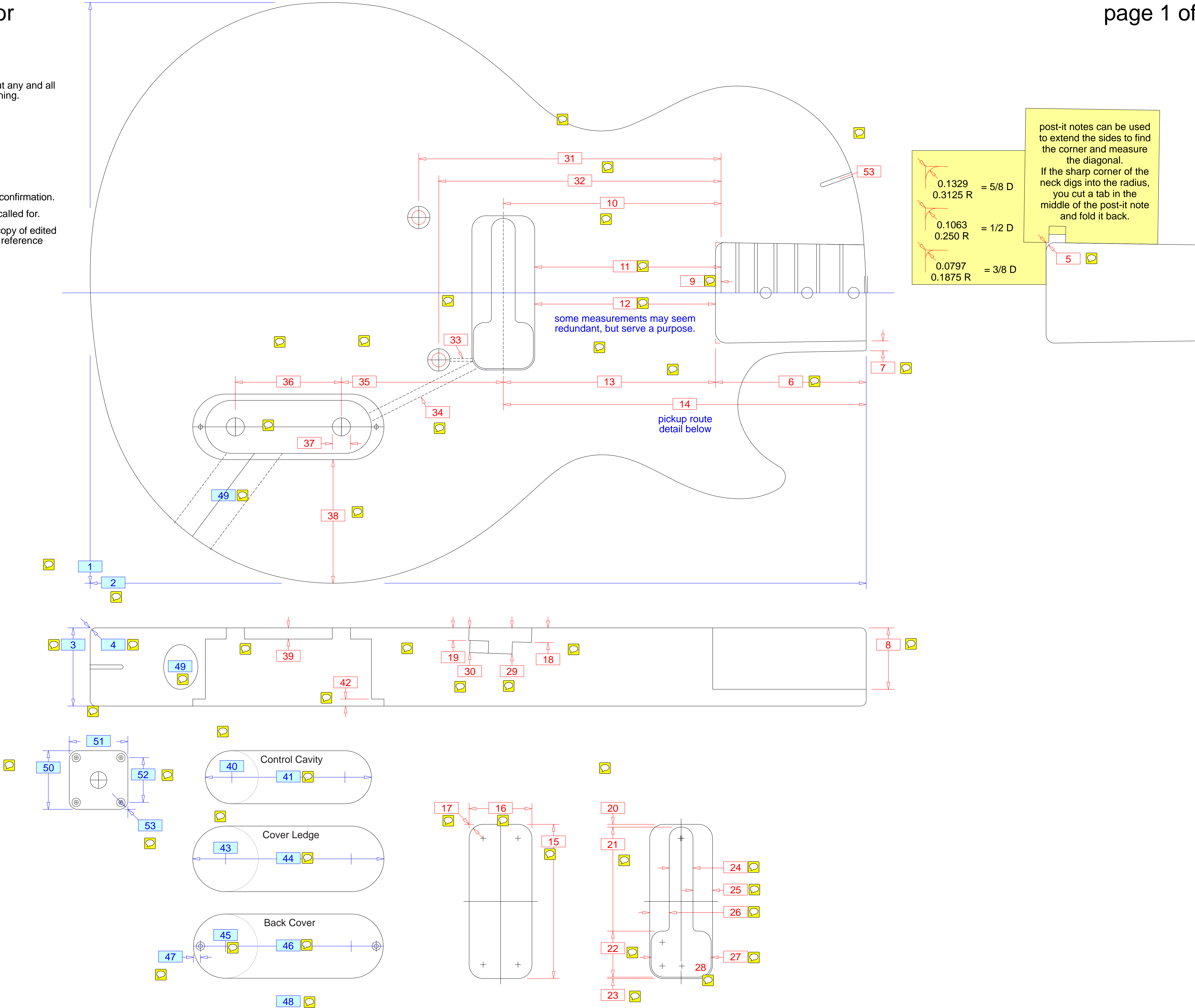
the jack plate does not need to be removed.

measurements in red are the most needed.

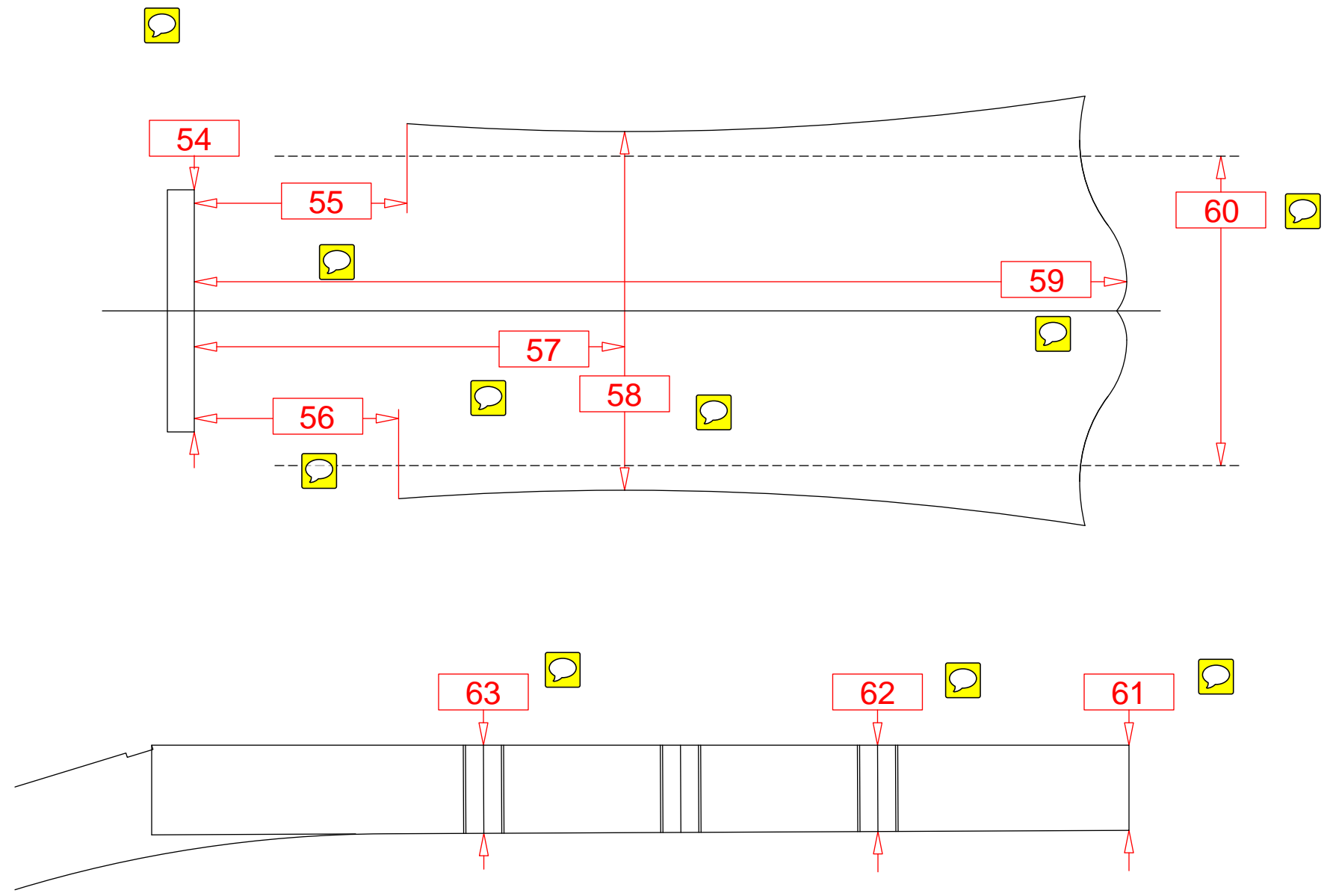
measurements in blue are the fairly standard, but could use confirmation.

double click on note icons for description of measurement called for.

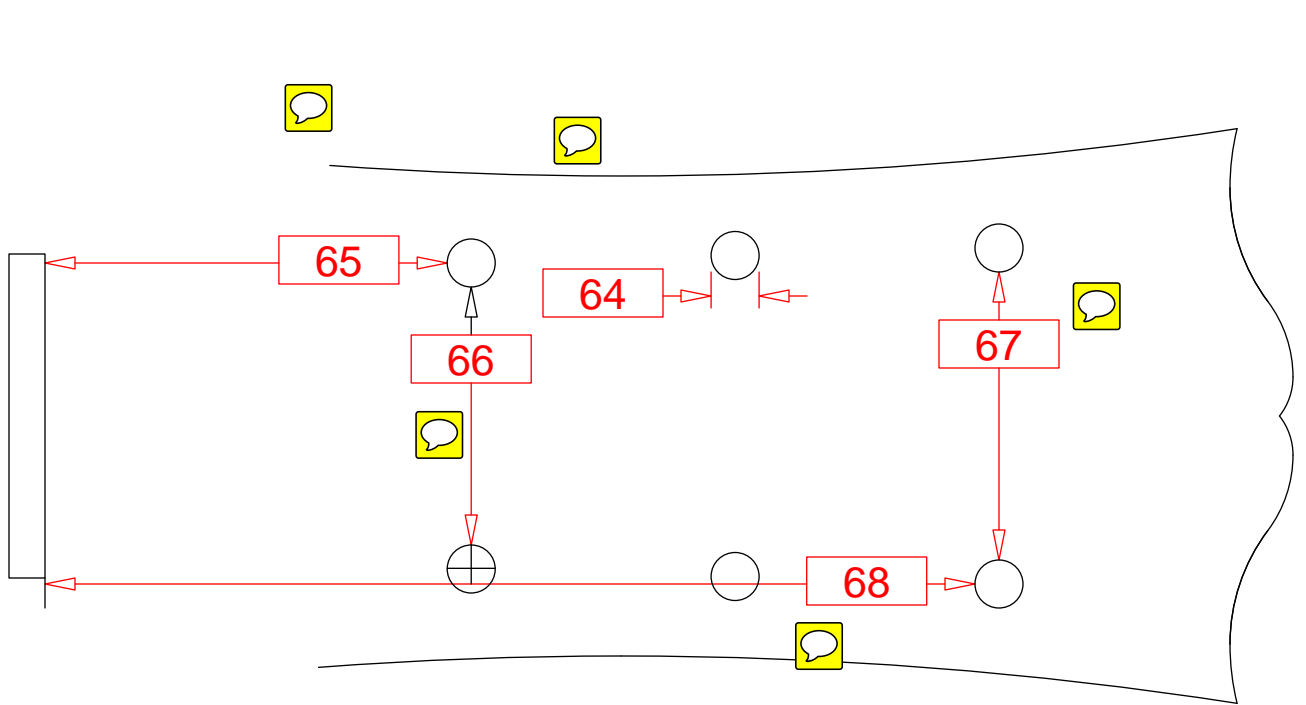
measurements can be entered into the note itself and your copy of edited pdf sent to DoneOne@gmail.com, or can be listed with the reference number.



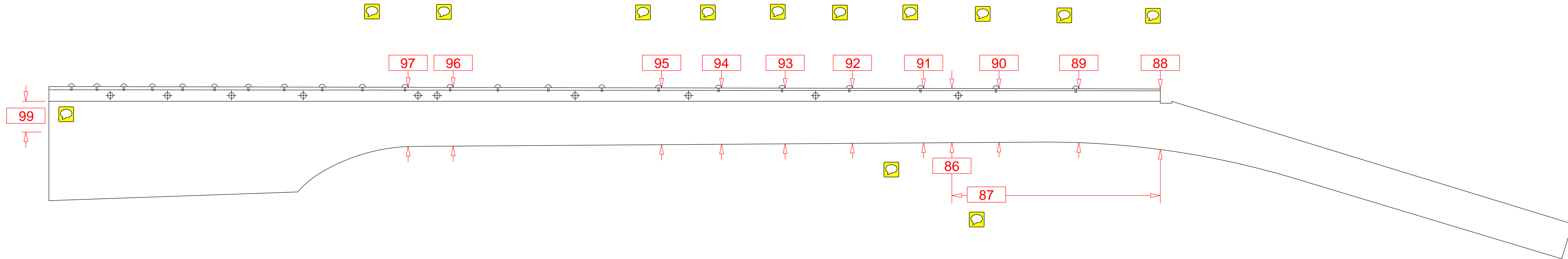
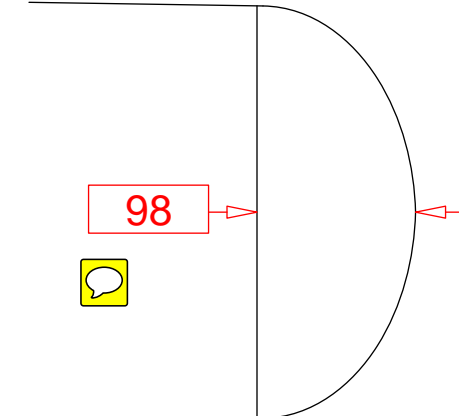
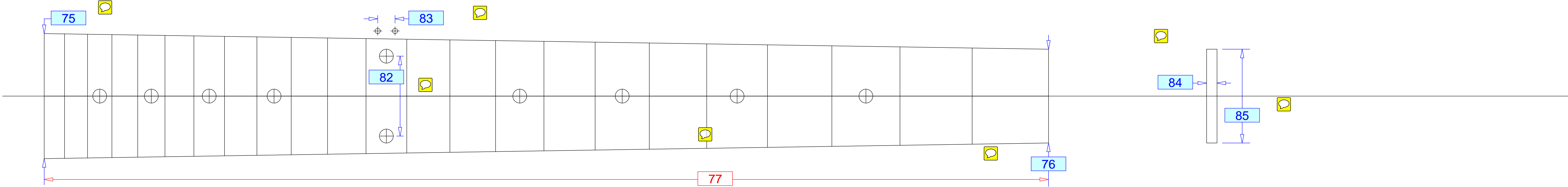
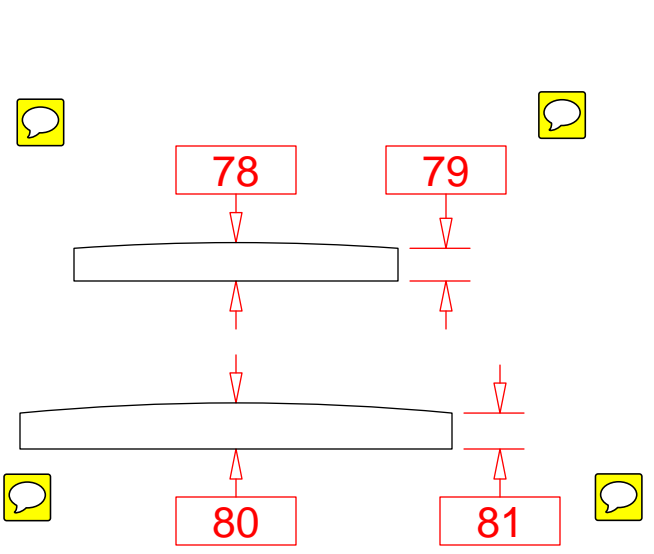
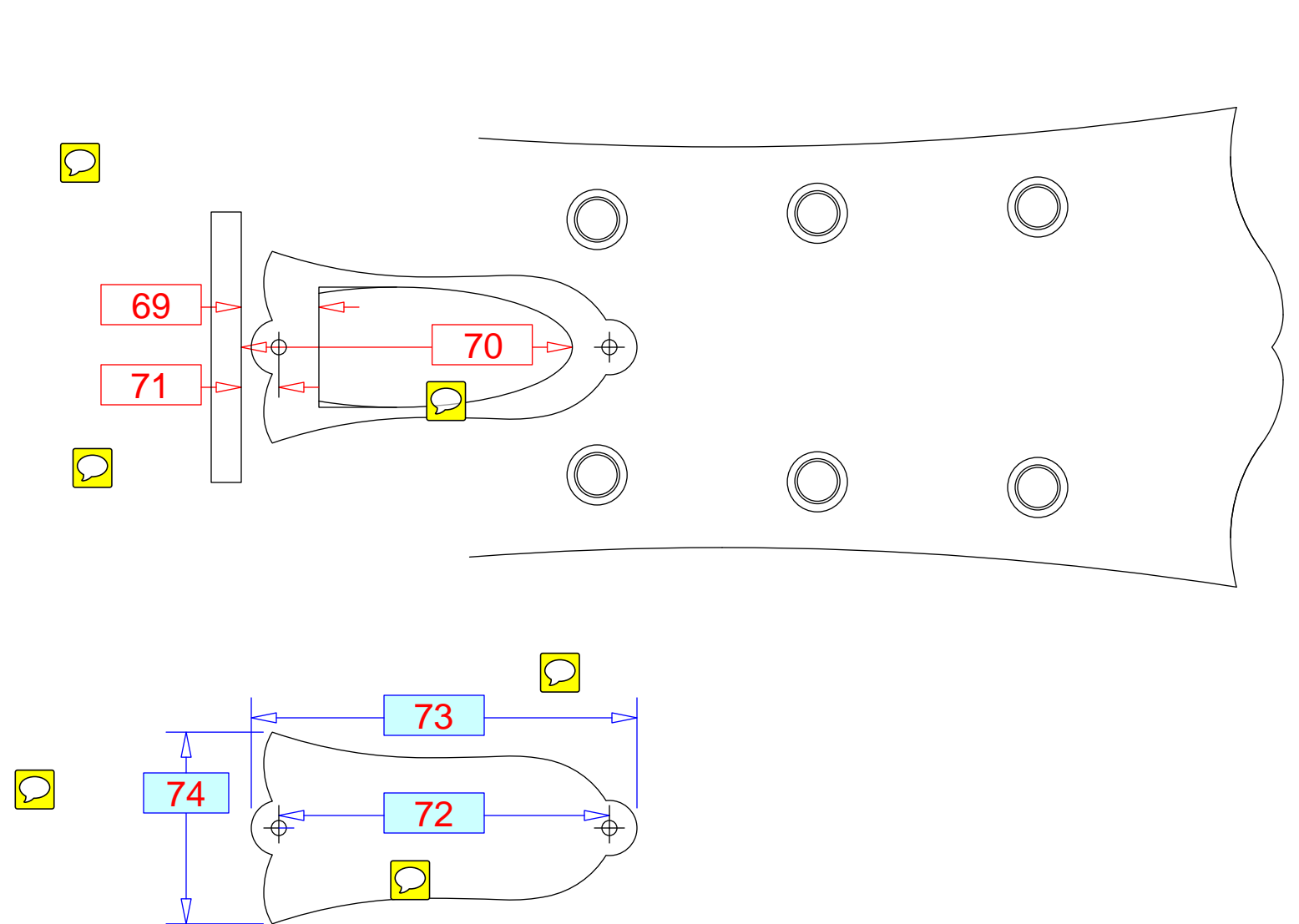
Shape



Tuners



Truss Access



Neck Angle

