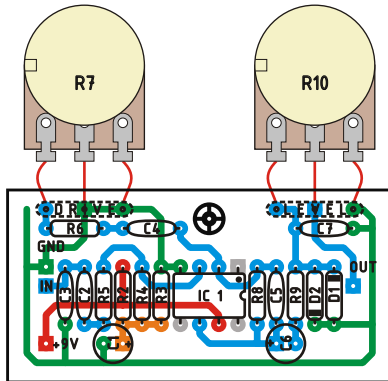


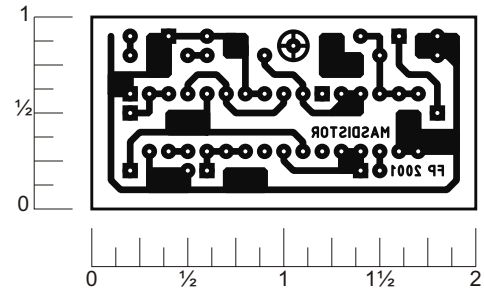
MAS DISTORTION

Rev.4.Dec.8.2005

You can build either the MXR Distortion+ or the DOD Overdrive 250 in this board. Try different kinds of diodes for clipping. These circuits are very similar, so much that they can be constructed around the same printed circuit board. Use the parts list to substitute with the values for the circuit you choose to build. Off board components except for the potentiometers are not shown on the layout. Registered trademarks are property of their owners.



LAYOUT



READY TO TRANSFER

MXR PARTS LIST

Resistors

R1 -
R2 - 1M
R3 - 1M
R4 - 1M
R5 - 10k
R6 - 4k7 (4.7k)
R7 - 500k Rev-log. pot.
R8 - 1M
R9 - 10k
R10 - 50k log. pot.

Capacitors

C1 - 1 μ F
C2 - 0.01 μ F
C3 - 0.001 μ F
C4 - 0.047 μ F
C5 - 10pF
C6 - 1 μ F
C7 - 0.001 μ F

ICs

IC1 - 741

DOD PARTS LIST

Resistors

R1 -
R2 - 20k
R3 - 20k
R4 - 1M
R5 - 10k
R6 - 47k
R7 - 500k Rev. Log. pot.
R8 - 1M
R9 - 10k
R10 - 100k log. pot

Capacitors

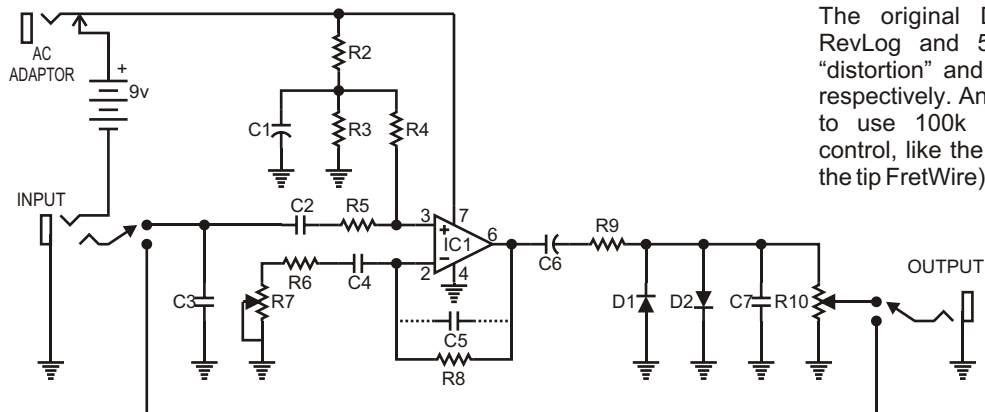
C1 - 10 μ F
C2 - 0.01 μ F
C3 -
C4 - 0.05 μ F
C5 -
C6 - 10 μ F
C7 - 0.001 μ F

ICs

IC1 - 741

Layout and presentation by Francisco Peña 2001 - 2003©.
All rights reserved. Authorization for personal use only.
any commercial use is forbidden.
Permission for posting/serving limited to
<http://www.tonepad.com>
Permission refused for posting from other sites.

Schematic



NOTES:

The original Dist+ used 500k RevLog and 50k Log pots for "distortion" and "volume" controls respectively. An advisable mod is to use 100k Log for "volume" control, like the DOD. (Thanks for the tip FretWire)