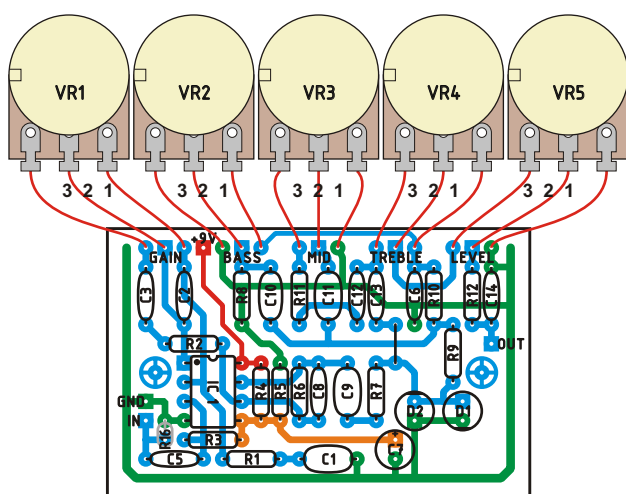
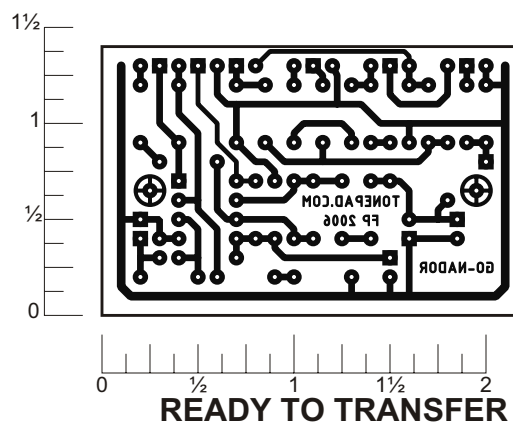


Build the Marshall Guv'nor, based on the schematic by Michael Burgundy. The circuit has been modified for true bypass switching. Trademarks remain property of their owners.



LAYOUT



Parts List

Resistors

R1 - 2k2 (2.2k)
R2 - 10k
R3 - 1M
R4 - 47k
R5 - 47k
R6 - 680k
R7 - 1k
R8 - 680 ohm
R9 - 1k5 (1.5k)
R10 - 680 ohm
R11 - 100 ohm
R12 - 22k
R16 - 2M2 (2.2M)

Potentiometers

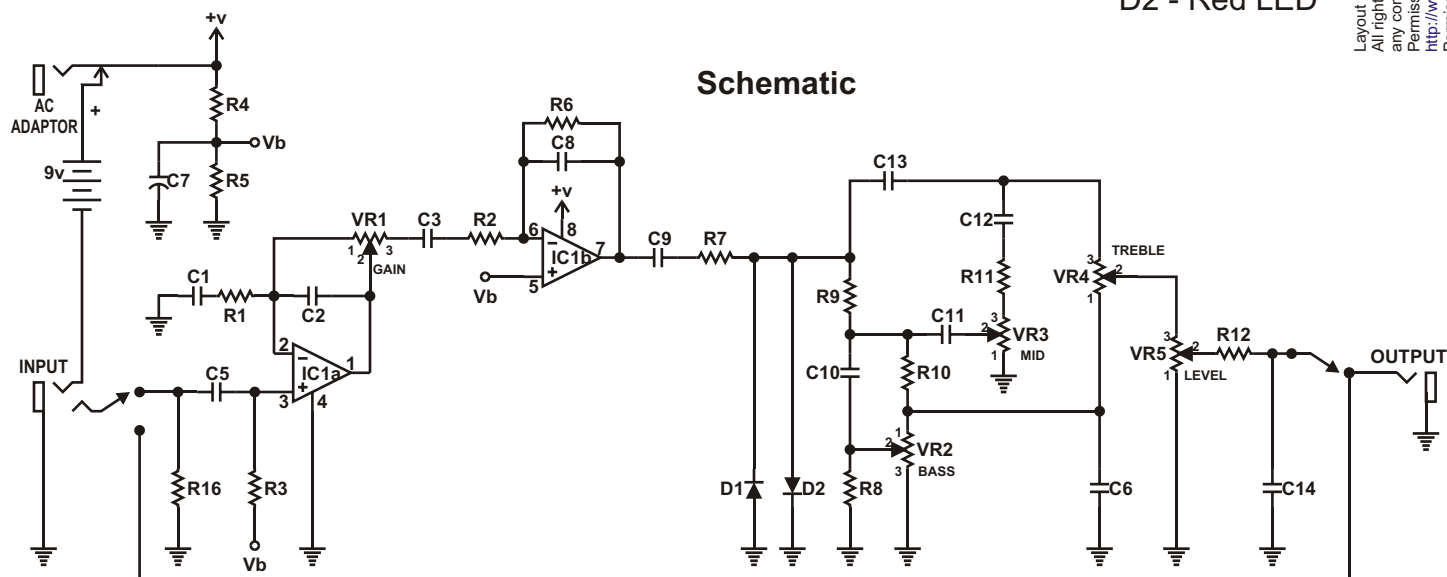
VR1 - 100kB
VR2 - 10kA
VR3 - 10kA
VR4 - 10kA
VR5 - 100kB

Capacitors

C1 - 0.1μF
C2 - 120pF
C3 - 0.068μF
C5 - 0.01μF
C6 - 0.068μF
C7 - 10μF
C8 - 220pF
C9 - 0.22μF
C10 - 0.1μF
C11 - 0.22μF
C12 - 0.01μF
C13 - 0.004μF
C14 - 470pF

IC's/Diodes

IC1 - TL072
D1 - Red LED
D2 - Red LED



Schematic