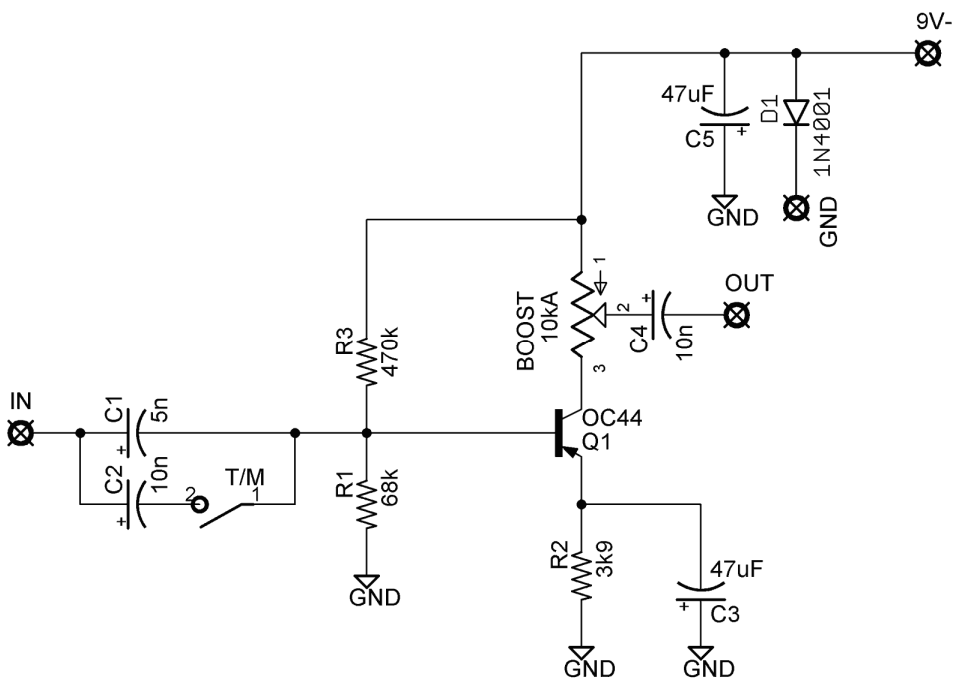
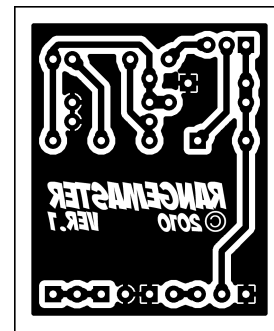
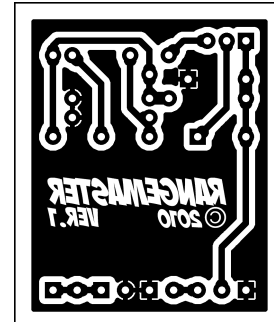
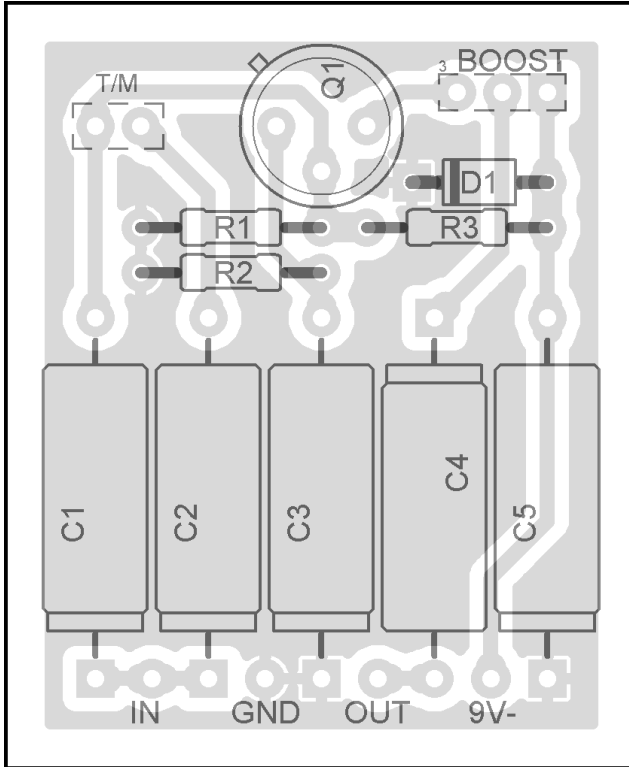


RANGEMASTER

PCB artwork ©2010 madbeanpedals

Ver.1 03.15.10



Resistors

R1	68k
R2	3k9
R3	470k

Caps

C1	5n
C2	10n
C3	47uF
C4	10n
C5	47uF

Diodes

D1	1N4001
Transistors	
Q1	OC44

Switches

T/M	SPST
-----	------

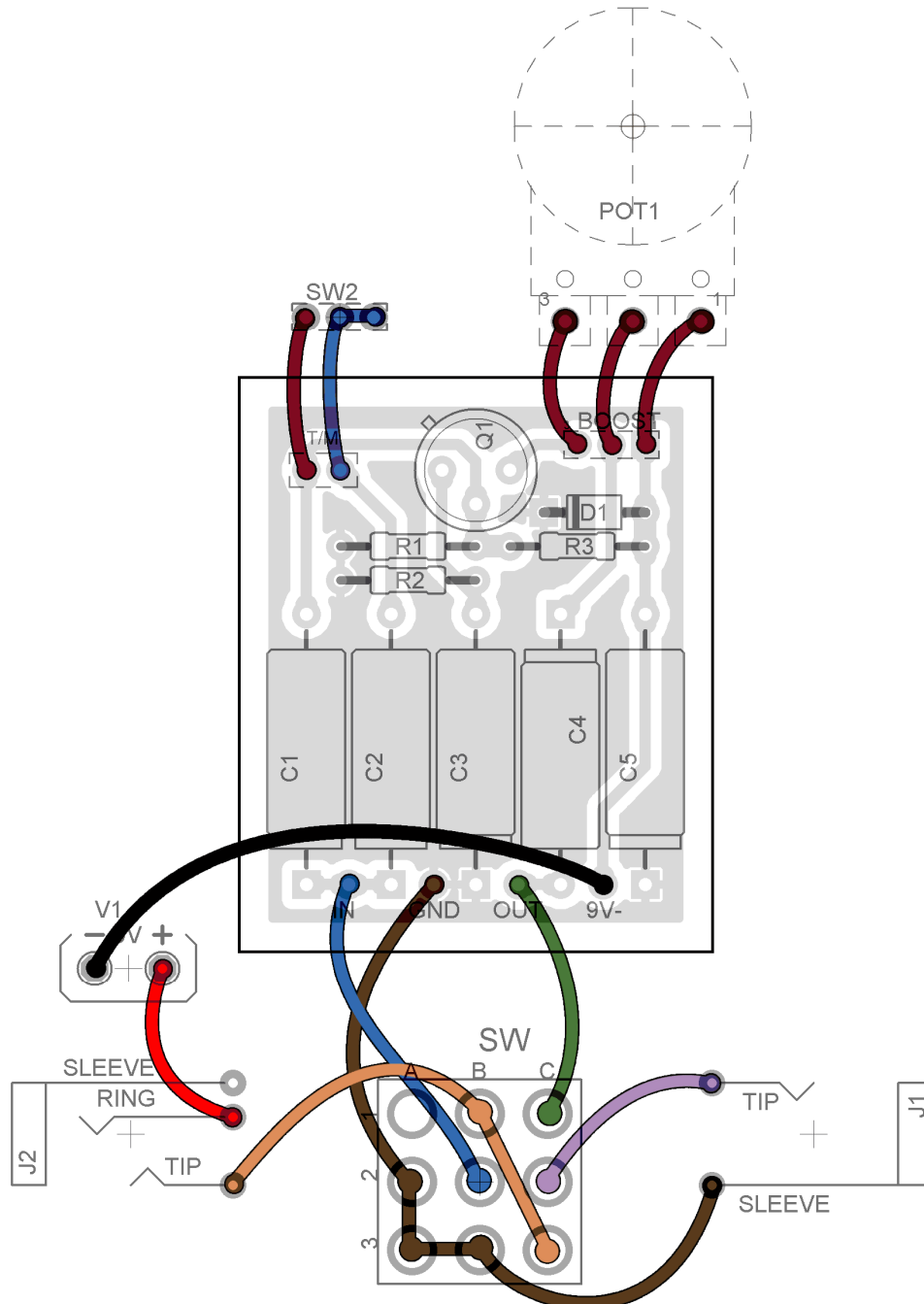
Pots

BOOST	10kA
-------	------

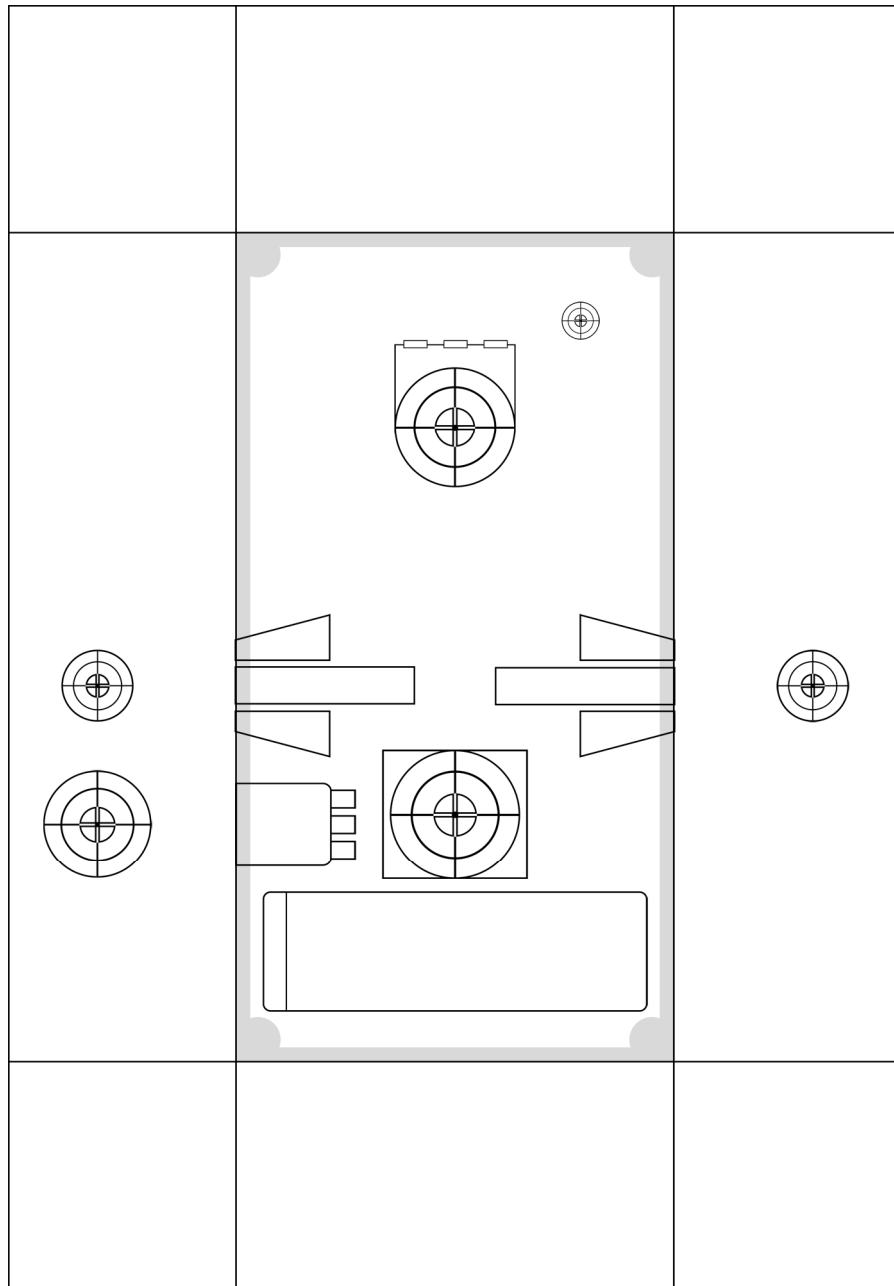
Notes

This is a positive ground effect!

- The T/M switch lets you choose between treble boost or mid boost.
- The T/M switch can be either an SPST or SPDT.
- OC44 is the standard transistors, but others will work. You can find a wide selection of possible transistors at www.smallbearelec.com.
- Metal film resistors will give you the lowest noise floor. Carbon comp will give you the most bragging rights.
- You can find a decent selection of Sprague Atom electrolytic caps at www.mouser.com. C1, C2 and C4 do not have to be electrolytic. They are simply drawn that way on the schematic.



1590B/1290S Enclosure



This drilling template is provided "as is". Use at your own risk!